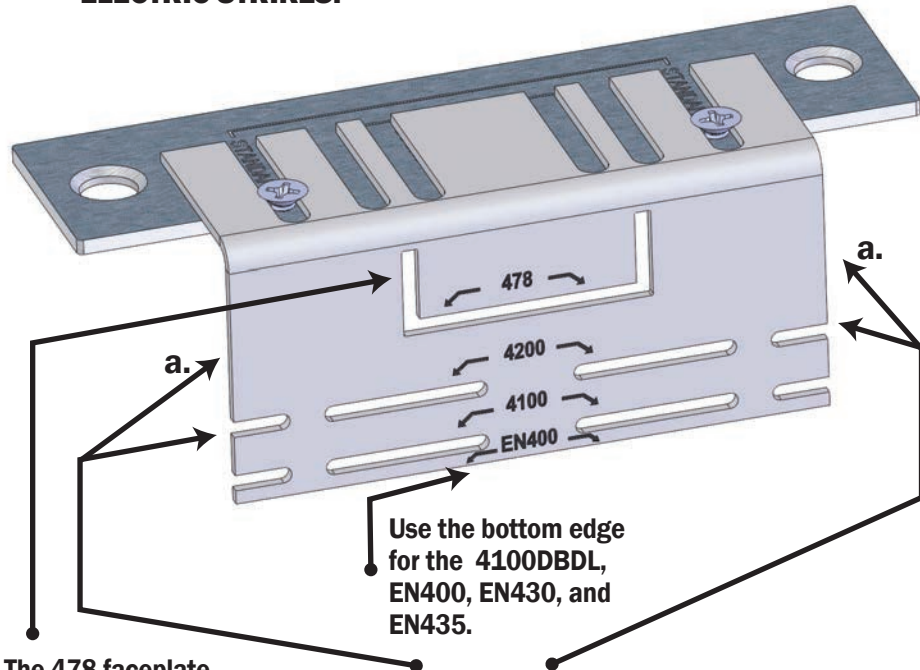


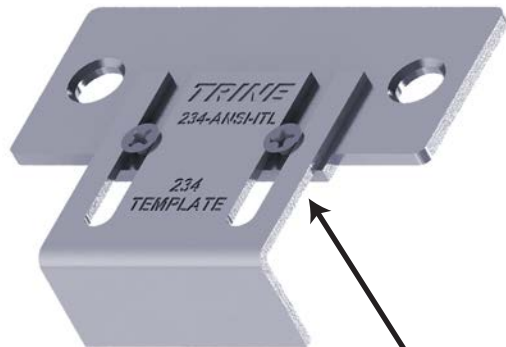
**FOR USE WITH THESE TRINE  
ELECTRIC STRIKES:**



The 478 faceplate requires only this notch on the face of the frame.

For the 4200, 4100, and EN400 (EN430, EN435, and 4100DBDL) cutouts mark the scribe point the arrows on the installation tool point to and also the edges of the template (a.)

Use the bottom edge for the 4100DBDL, EN400, EN430, and EN435.



234 plate for the ANSI-ITL adjusts for the 234 faceplate and the extended lip 234X faceplate.

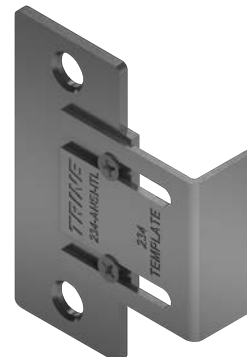
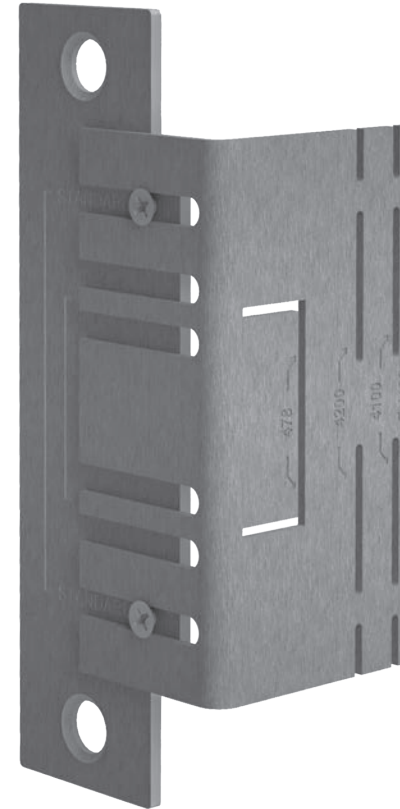
# ANSI-ITL INSTALLATION TOOL

**TRINE**  
ACCESS TECHNOLOGY.  
2 Parklawn Drive | Suite F | Bethel | Connecticut | 06801

**TRINE ANSI-ITL THE COMPREHENSIVE  
INSTALLATION TOOL FOR TRINE'S  
PREMIUM 4-7/8" & 2-3/4" TALL ANSI  
SOLUTIONS.**

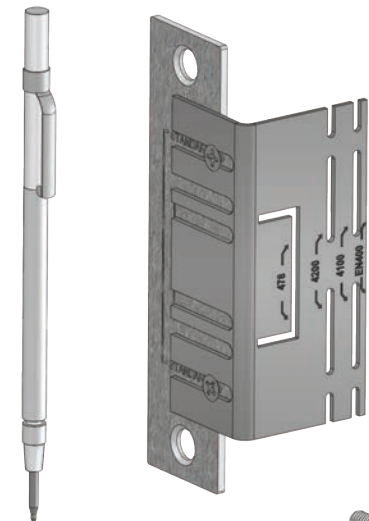
Congratulations on the purchase of this quality TRINE installation tool. This product has been designed to make installations easier, perform reliably, and provide years of trouble free service.

BEFORE PROCEEDING with your installation, please review the following list of features. If you have any questions after reading this document please call TRINE's TECHNICAL SUPPORT (203) 730-1756, or visit us online @ [trineonline.com](http://trineonline.com)



**What's in the box:**

- 4-7/8" base plate
- 2-3/4" base plate
- (2) Adjustable frame face templates
- Scribe Pen
- (2) Template mounting screws

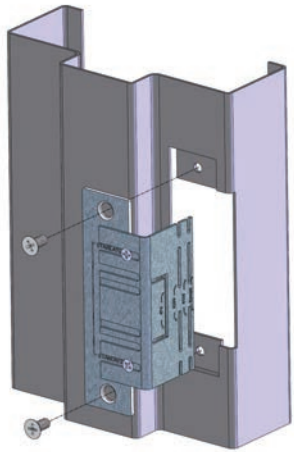


v. 17.1110

PHONE: (203) 730-1756  
FAX: (203) 730-1781  
2 Parklawn Dr., Suite F  
Bethel, CT 06801

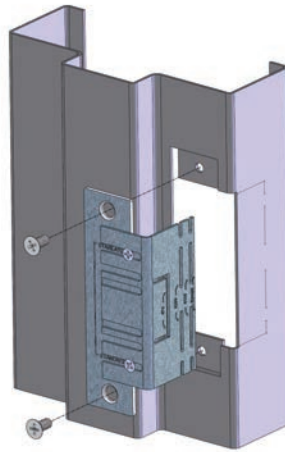
email: [customerservice@trineonline.com](mailto:customerservice@trineonline.com)  
website: [www.trineonline.com](http://www.trineonline.com)

# USING THE ANSI-478-ITL



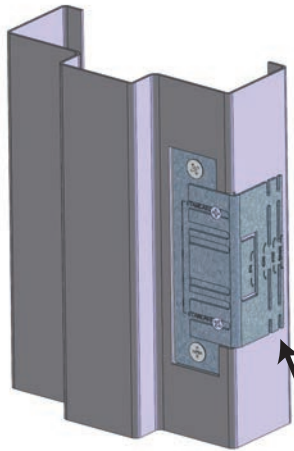
INSTALL THE 478-ANSI-ITL INTO THE THE FRAME USING THE SUPPLIED MOUNTING SCREWS.

1



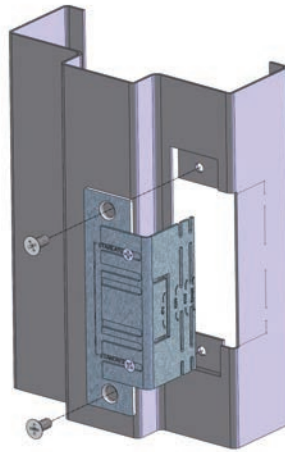
THE TEMPLATE LIP SHOULD SEAT ON THE FACE OF THE FRAME AS SHOWN.

2



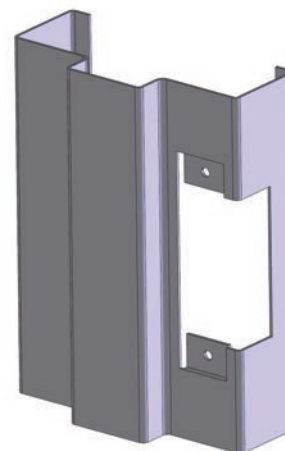
USING THE SCRIBBER, TRACE THE EDGE OF LIP TEMPLATE APPLYING ENOUGH PRESSURE TO LEAVE A MARK ON THE FRAME.

3



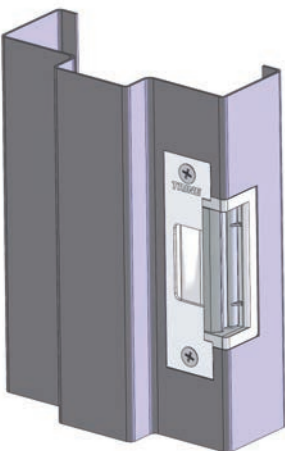
REMOVE THE TEMPLATE FROM THE FRAME, EXPOSING THE SCRIBED GUIDE LINES.

4



CUT THE FACE OF THE FRAME UP TO YOUR MARKED LINES.

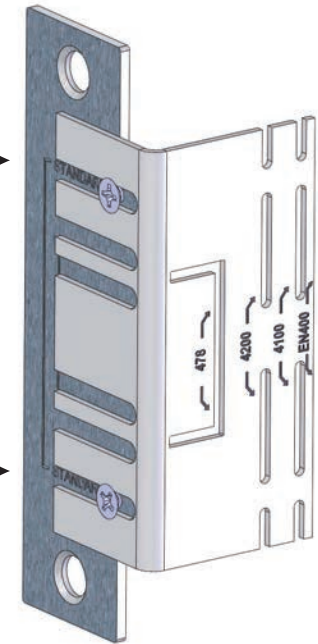
5



CHECK THE FIT OF THE ELECTRIC STRIKE. MAKE ADJUSTMENTS TO THE CUT IF NEEDED.

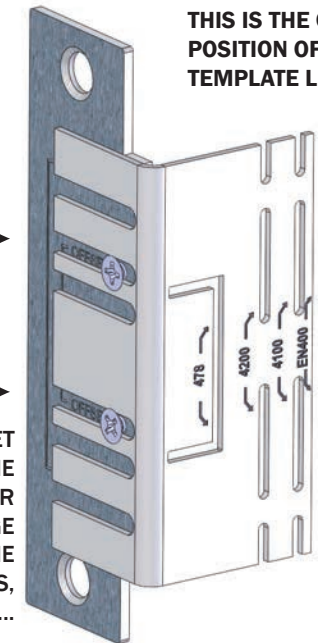
6

THIS IS THE STANDARD POSITION OF THE TEMPLATE LIP.



THE WORD "STANDARD" MUST SHOW THROUGH THE CHANNELS.

THIS IS THE OFFSET POSITION OF THE TEMPLATE LIP.



THIS IS THE OFFSET POSITION OF THE TEMPLATE LIP. USE FOR LOCKSETS WITH LARGE OFFSETS LIKE THE SCHLAGE L-SERIES, YALE 8700...